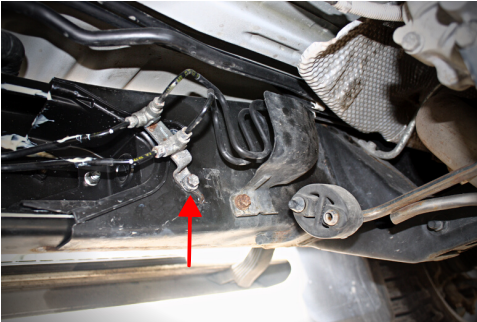


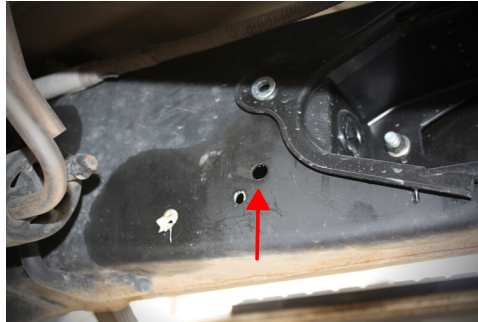
Tacoma T-Case Skid Plate Kit

2005-Current Tacoma 4wd *Access Cab & Double Cab Only*

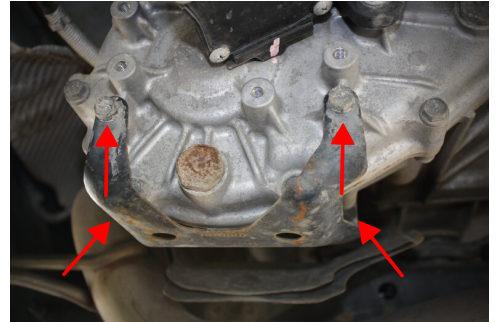
Note: (2) 3/8" holes are required to be drilled for Crossmember installation.



Remove factory M8 bolt holding brake line bracket to driver side frame rail.



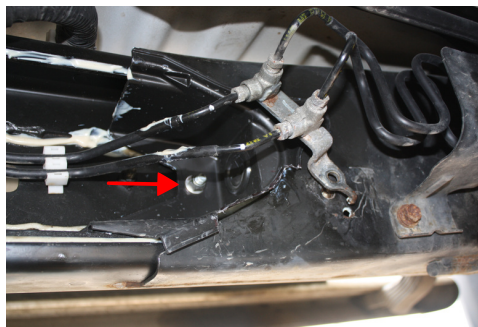
Locate matching hole on passenger side frame rail. (This may be covered by a sticker.)



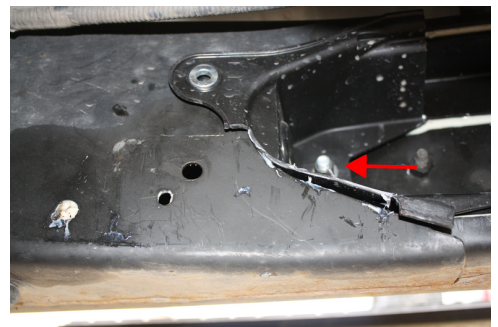
Remove factory T-Case shield. *Optional*



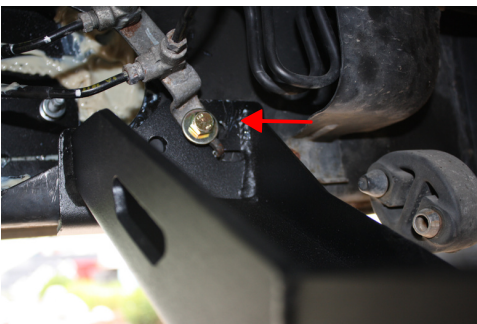
If plastic frame caps are present, trim both as shown to allow fitment of new Crossmember. Test fit Crossmember to check clearance.



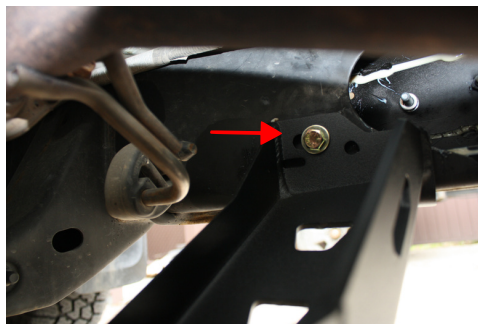
Driver side cap trimmed. Remove cap for Crossmember installation.



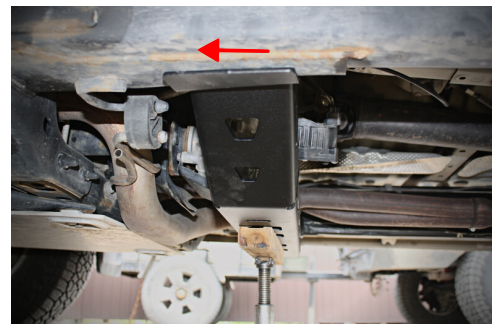
Passenger side cap trimmed. Remove cap for Crossmember installation.



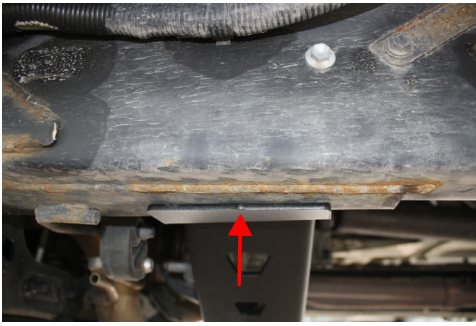
Lift Crossmember into position and install supplied **M8x30mm** bolt with washer through brake line bracket and into frame hole. Do not tighten yet.



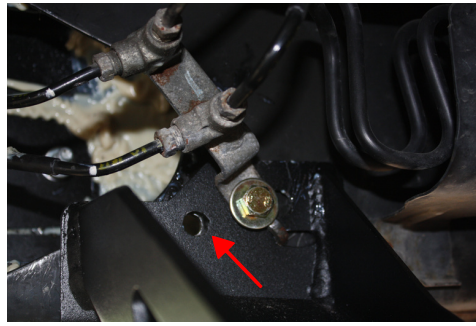
Install supplied **3/8x1"** bolt with washers and locknut through passenger side frame hole. Do not tighten yet.



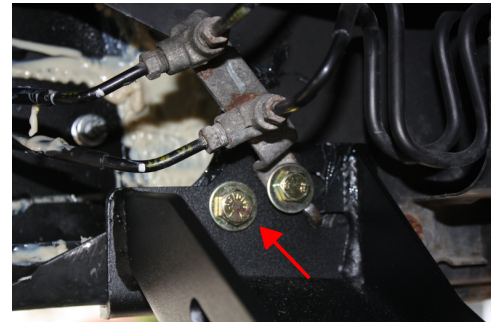
With hardware still loose, support Crossmember with a jack and adjust forward until it is snug between the frame rails and parallel to factory Transmission Crossmember.



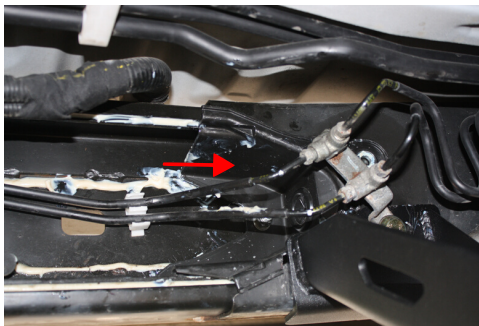
Lift Crossmember up until frame supports are seated firmly against the frame. **Tighten driver side M8 bolt to 28ft-lbs. Tighten passenger side 3/8 bolt to 33ft-lbs.**



With jack still in place, use the Crossmember as a guide and drill out the rear hole on both driver and passenger sides to 3/8". Paint any bare metal.



Install supplied **3/8x1"** bolts, washers and locknuts on driver and passenger sides. **Tighten 3/8 bolts to 33ft-lbs.** Remove support jack.



Reinstall trimmed driver and passenger side plastic frame caps (if equipped). Do not over-tighten. Crossmember installation is now complete.



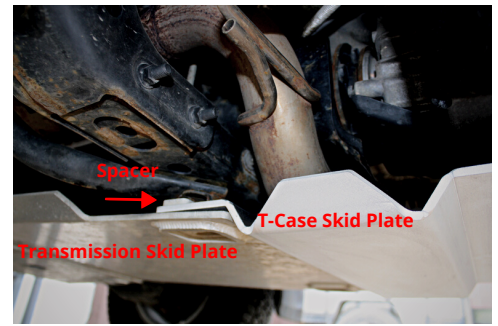
2016-Current

2016-Current: Remove (4) rear M8 bolts from OKX Transmission Skid Plate. Save slotted spacers and hardware.

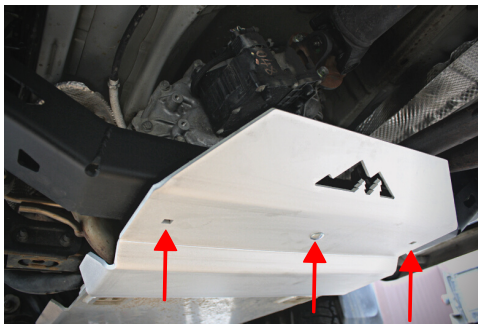


2005-2015

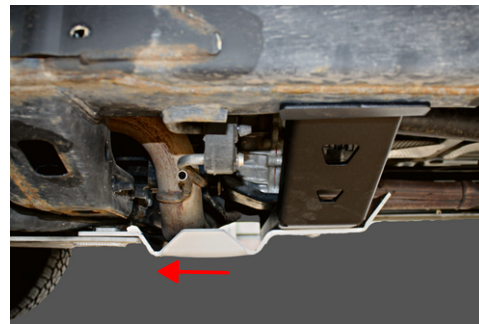
2005-2015: Remove (2) rear carriage bolts from OKX Transmission Skid Plate. Save hardware and spacers (if used).



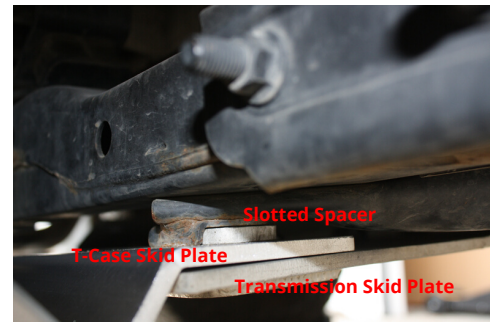
Position T-Case Skid Plate on top of Transmission Skid Plate. *Loosen front bolts if necessary.*
2016+: Place slotted spacers back at the top and reinstall (4) M8 bolts/washers.
'05-'15: Place thick spacers back on top (if used) and reinstall (2) 3/8" carriage bolts/washers/nuts.
Do not tighten yet.



Install supplied **3/8" carriage bolts** with large flat washers and locknuts through Skid Plate and Crossmember. Do not tighten yet.



Adjust T-Case Skid Plate forward & align with Transmission Skid Plate. Check for clearance with exhaust pipe- adjust both Skid Plates forward if necessary.



Ensure slotted spacers are in the correct position as shown. **Tighten All M8 bolts to 28ft-lbs. Tighten 3/8" carriage bolts to 33ft-lbs.**

Transfer Case Skid Plate installation is now complete!

Inspect and re-torque all hardware periodically