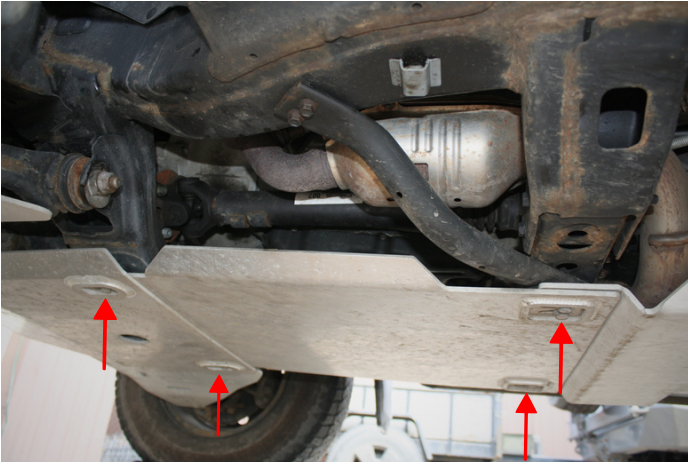


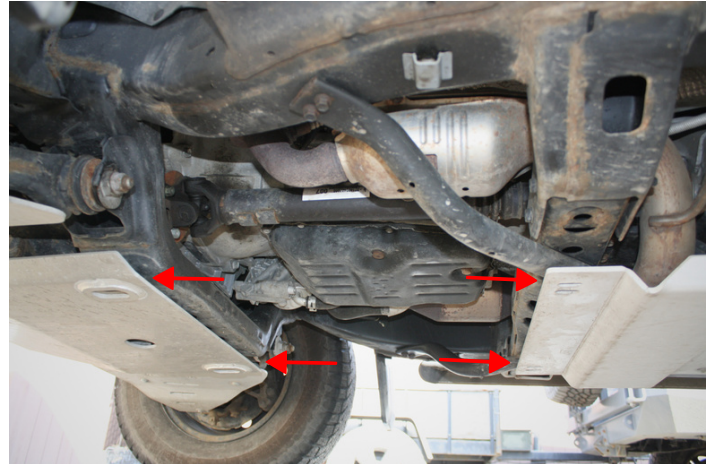


# Cat Guards - Installation Guide

'16-'23 Tacoma / '03-'23 4Runner / '07-'14 FJ / '03-'09 GX470



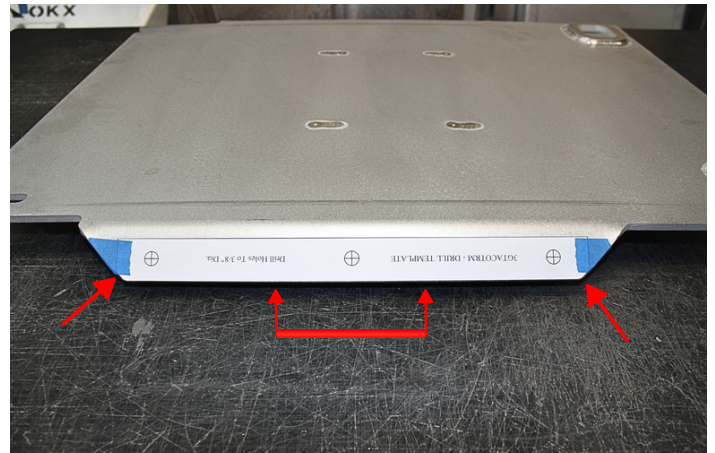
Installation of the Cat Guards requires removal of the Transmission Skid Plate (if already installed). The front bolts may be just loosened and left in place.



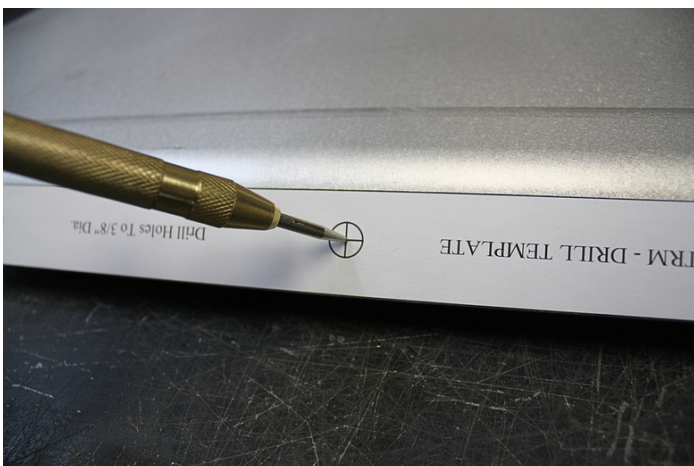
Be sure to retain the spacers from both the Engine and Transmission Skid Plates for reinstallation.



A Drill Template is included, and is specific to each Transmission Skid Plate model.



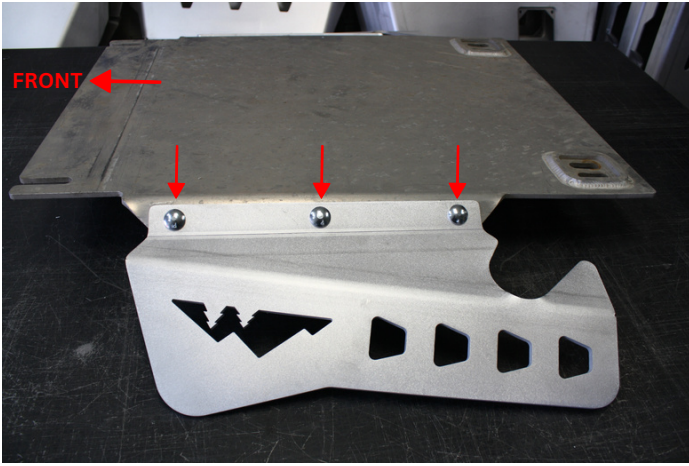
With the Transmission Skid Plate on a flat surface, tape the Drill Template in place as shown. **Note: The angled corners and edge of the template should follow the outer edge of the Skid Plate.**



With the Drill Template positioned correctly, mark each of the 3 holes with a center punch. Carefully remove the Drill Template and repeat for the opposite side of the Skid Plate.



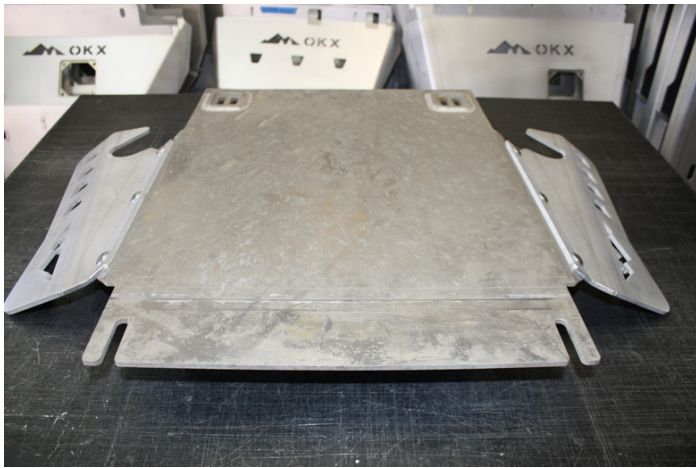
Once both sides have been marked, drill out the 6 holes to 3/8". We recommend starting with a smaller pilot bit such as 1/8", before the final size. Clean up any burrs left on the backside of the holes.



Install the supplied **3/8" carriage bolts** through the Cat Guard and Transmission Skid Plate. The Cat Guard should be positioned on the outside of the Skid Plate with the logo toward the front of the vehicle.



Secure using the supplied **3/8" flat washers & Nyloc nuts**. Tighten to *30ft-lbs*, or snug. Repeat for the opposite side.



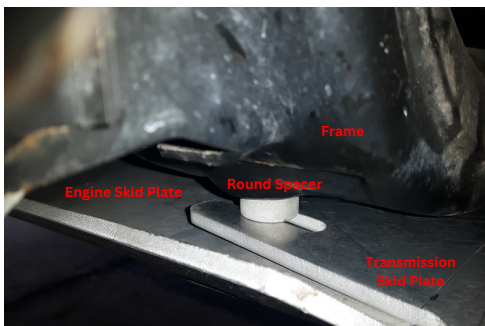
With the Cat Guards securely fastened to the Transmission Skid Plate, the assembly can now be reinstalled on the vehicle.



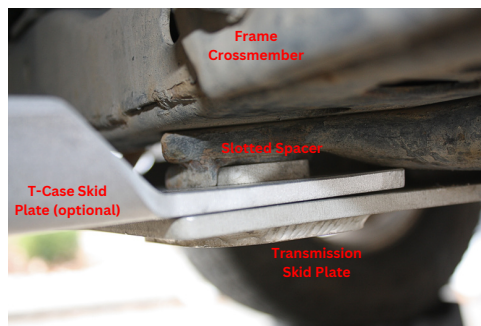
Raise the Transmission Skid Plate assembly into position on top of the Engine Skid Plate.

- 1. Lift the round spacers up to the top when sliding the Transmission Skid Plate into place.**
- 2. Reinstall the slotted spacers at the rear tube supports (if removed).**

Loosely install the remaining original hardware and adjust Skid Plate Position as necessary.



**Correct Engine Skid Plate Spacer position.** (round spacers at front)



**Correct Transmission Skid Plate Spacer position.** (slotted spacers at rear)

With the spacers in the correct position and the Skid Plate assembly aligned, tighten all M8 hardware to **28ft-lbs**.

***Inspect components and retorque all fasteners periodically.***